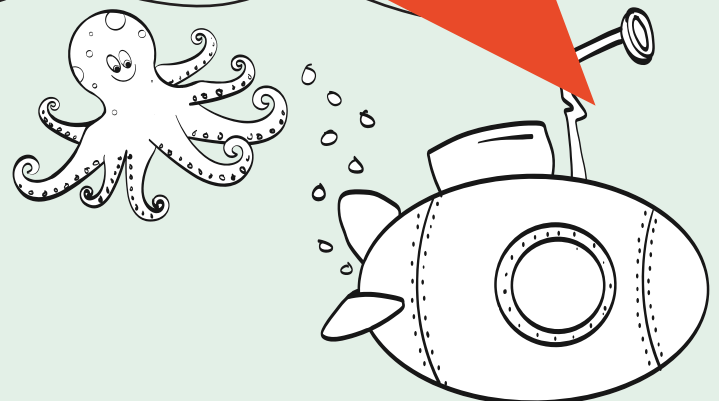
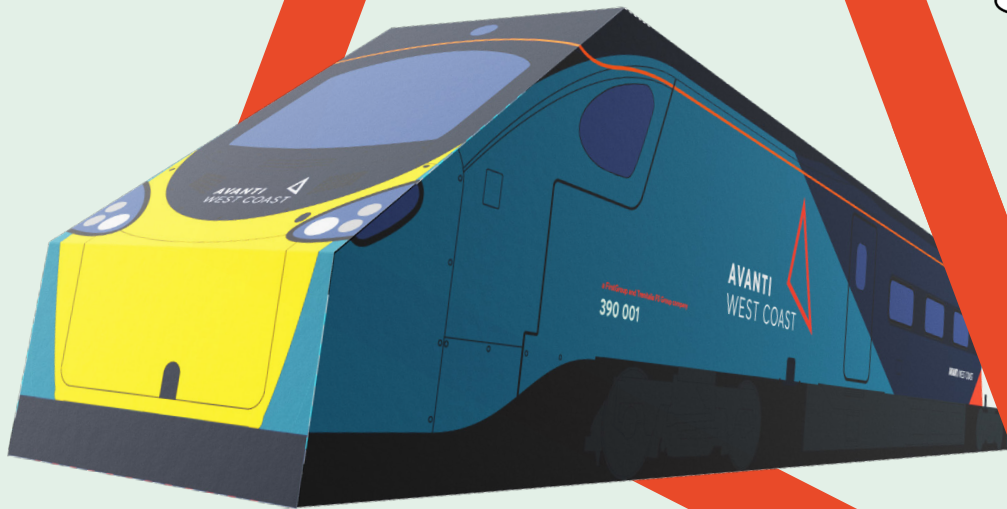


Build your own model train



Your pop-up paper Pendolino

There's a 3D Avanti West Coast train waiting to pop out of this page. So get your engineering brain in gear, ready to make your very own model train.

What you'll need

- **Printer**
- **Scissors**
- **Paper**
(the heavier the better – card if you have it)
- **Sticky tape or glue**
(tape works best)

How to build your train

1. Print this PDF

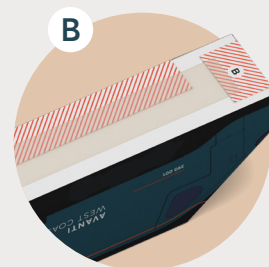
For just the train, you'll only need to print page 3

2. Cut out the livery*

Cut around the train, following the grey lines. Make sure you don't cut off the red and blue tabs – these will come in handy later

3. Assemble your train

- Fold where the dotted lines are
- Fold the blue tabs, marked **A**
- Stick them to the inside of the train
- Fold the red tabs, marked **B**
- Stick them to the outside of your train's base



4. Playtime!

Take your train on a tour of the house



Sharing is caring. Show us your skills.
Tag us @avantiwestcoast using #MyModelTrain

*'Livery' (pronounced liv-uh-ree) is the name for the design on the outside of a train.

