

Our Customer & Communities Investment Scheme

Apply for a share of £2.2million
and bring your community project to life.

October 2020

AVANTI
WEST COAST



Contents

- 01** Overview
- 02** How it works
- 03** How to get involved
- 04** Is your scheme eligible?
- 05** Submitting your scheme
- 06** How to apply
- 07** Support

01 Overview

We are delighted to announce our Customer & Communities Investment Scheme. Its aim is to support projects across the routes and regions we serve and create a difference that benefits the community.

The Customer and Communities Investment Scheme (CCIS) is in place to support schemes across the Avanti West Coast route. We are looking for ideas that bring benefits to our stations and our communities which address regeneration challenges and tackle social needs.

This is a chance for people along our route to apply for a share of the fund which, in its first year, is estimated to total £2.2 million (subject to terms and approvals).

This is a substantial fund and we can't wait to see the benefits this fund will bring to our route. It's going to make a huge impact at our stations and in our communities.



02 How it works

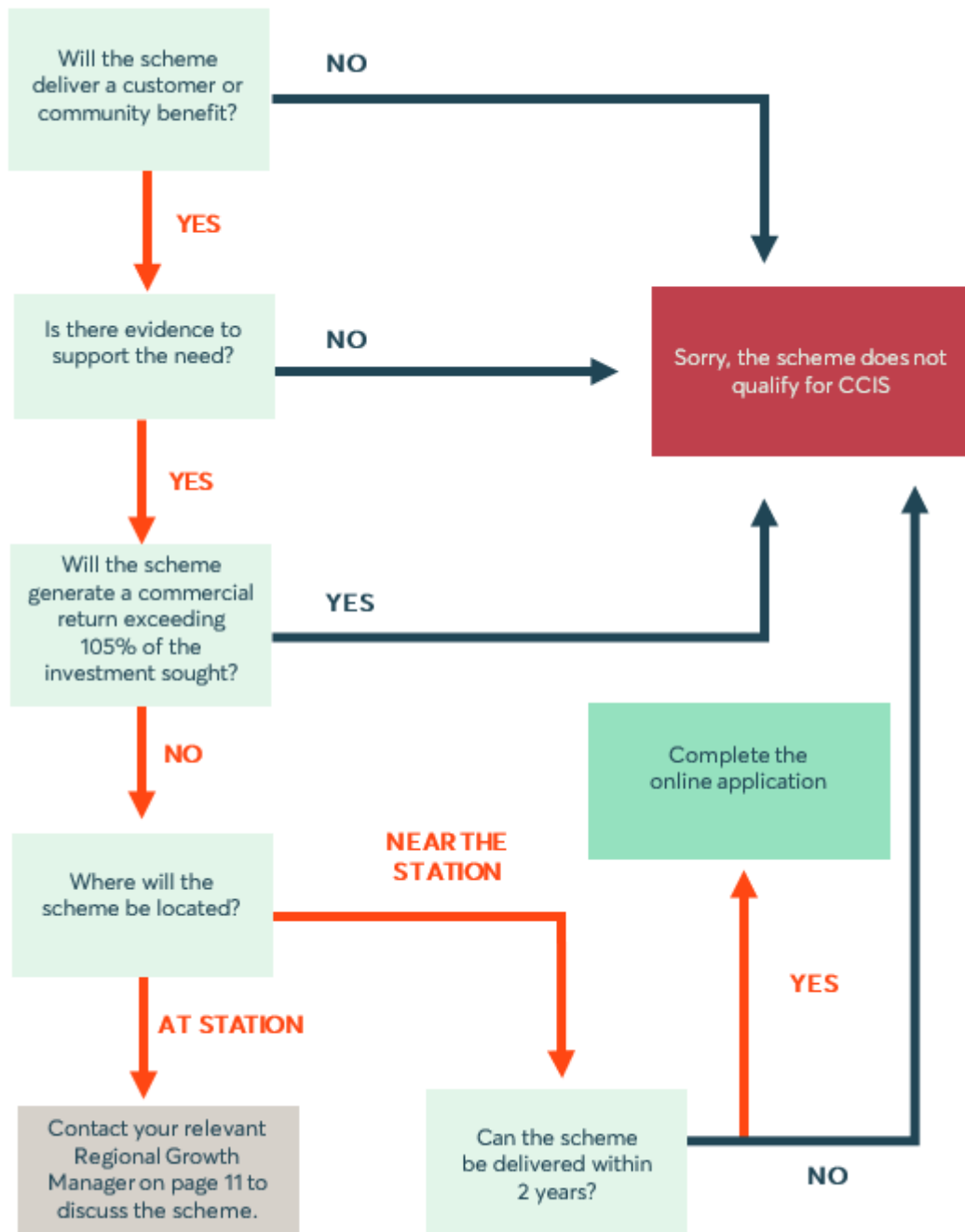
The CCIS enables us to respond to feedback from our customers, stakeholders, and community groups to deliver improvements across our route.

Every year for the next five years, we'll have a fund to share with local schemes which will be prioritised and submitted to the Department for Transport (DfT) for approval.



03 How to get involved

Perhaps the most exciting part of all of this is that the ideas for these projects come from the community and our customers. You are the people who know what challenges there are, and what changes are needed to make a difference. So, if you have a great idea, or you're already involved in something that you think fits the bill, then click [here](#) to apply. If approved, your innovative change-making project could be coming to life early next year.



04 Is your scheme eligible?

The UN Sustainable Development Goals (SDGs) have helped shape how we think the funds for CCIS can play a role in making a difference in the community. The CCIS will look to use the SDGs as themes for any initiative. The more themes the initiative can cover, the more sustainable the project will be to the benefit of our communities.

The goals address the global challenges we face and cover social, environmental, and economic development issues such as poverty, education, inequality, climate, water, and food crises. The SDGs provide a focus for how businesses, governments and civil society can tackle these challenges to promote a more sustainable future for all.



We do not doubt there will be other worthy schemes which do not necessarily fall into one these themes and therefore encourage you to submit these for consideration.

05 Submitting Schemes

Month	Action
October – November 2020	Consultation and Application All schemes should be submitted online no later than 15 November 2020 at 23:59.
November 2020	Consolidation and Review Proposed schemes will be consolidated and reviewed by a working group with agreement reached for which schemes will be prioritised and submitted.
December 2020	Submission Schemes will be submitted to the DfT for review and approval.
01 April 2021 – 31 March 2023	Delivery Approved schemes are to be delivered.

Application Guidance

To apply for funding, you will need to complete an online application form found [here](#).

All schemes should be submitted by final submission on 15/11/2020 at 23:59.

You'll be required to provide details of the location where the scheme will take place, including the postcode and closest Avanti West Coast Railway station.

Here's a list of potential scheme benefits for customers and communities, these can include:

- Improvements to station facilities
- Improved social value in the community
- Improvements to the customer experience
- Improvements to integrated transport for end to end journey
- Increased awareness of the benefits of the railway
- Local economic improvements
- Reduction in environmental footprint

Costs

You will need to provide a breakdown of scheme costs. This should be itemised where possible, but we recognise that this is likely to be an estimate. Consider providing a breakdown of between 5 and 10 items e.g. Lighting - £500.

Third party funding contributions

We'll need details of any third-party funding contributions which have been secured. You will be asked to provide the value, source and any caveats which apply. If you have a suggestion for a scheme, but no third-party funding, discuss the opportunity with the relevant Regional Growth Manager who can assist with pursuing third-party funding (details can be found on pg.11).

Consents

You will need to be aware of any required consents, and how these may impact the proposed scheme. These include, but are not limited to:

- Listed Buildings Consent
- Landlords Consent
- Station Change
- Lease / Boundary Changes
- Equality Impact Assessment

Risks

We are keen to understand any risks which could jeopardise the successful delivery of the scheme. This will help us to evaluate your delivery plan.

Contact Details

You will need to provide the details of a lead contact for the scheme so that we can keep you updated with the progress of your proposal.



06 How to apply

We hope you have found this guide both useful and inspiring in support of your application to make a positive difference today and look after tomorrow across the West Coast Main Line.

Find out more information on how to apply [here](#).



07 Additional support

If you need any help and support in compiling your CCIS proposal, or you are unsure if the scheme you have in mind is suitable, please get in touch with one of our Regional Growth Managers:

Edinburgh & Glasgow Central

Damien Henderson

Regional Growth Manager

damien.henderson@avantiwestcoast.co.uk

Carlisle, Penrith, Oxenholme, Lancaster & Preston

Matt Worman

Regional Growth Manager

matthew.worman@avantiwestcoast.co.uk

Manchester Piccadilly, Stockport, Wigan North Western & Warrington Bank Quay

Charlie French

Regional Growth Manager

charlie.french@avantiwestcoast.co.uk

Macclesfield, Stoke-on-Trent, Crewe & Stafford

Mark Osborne

Regional Growth Manager

mark.osborne@avantiwestcoast.co.uk

Runcorn & Liverpool Lime Street

Nick Smith

Regional Growth Manager

nick.smith@avantiwestcoast.co.uk

Birmingham New Street, Birmingham International, Coventry & Rugby

Craig Mortiboys

Regional Growth Manager

craig.mortiboys@avantiwestcoast.co.uk

For any other enquiries please contact community@avantiwestcoast.co.uk

AVANTI
WEST COAST

