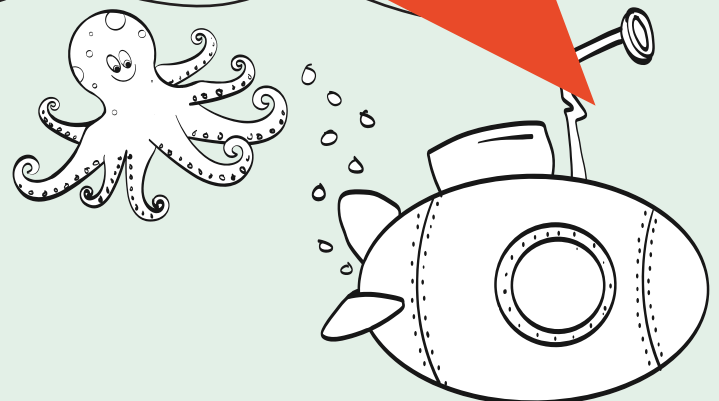


# Build your own model train



# Your pop-up paper Pendolino

There's a colourful, 3D Avanti West Coast train waiting to pop out of this page. So find your colouring-in kit, get your engineering brain in gear and make your very own model train.

## What you'll need

- **Printer**
- **Paper**  
(the heavier the better – card if you have it)
- **Colouring pens and/or pencils**
- **Scissors**
- **Sticky tape or glue**  
(tape works best)

## How to build your train

### 1. Print this PDF

For just the train, you'll only need to print page 3

### 2. Colour in the livery\*

You could even draw some passengers in the windows

### 3. Cut it out

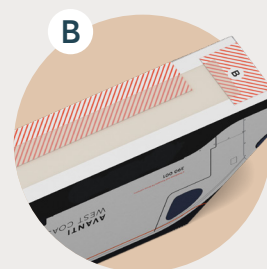
Cut around the train, following the grey lines. Make sure you don't cut off the red and blue tabs – these will come in handy later

### 4. Assemble your train

- Fold where the dotted lines are
- Fold the blue tabs, marked **A**
- Stick them to the inside of the train
- Fold the red tabs, marked **B**
- Stick them to the outside of your train's base

### 5. Playtime!

Take your train on a tour of the house



Sharing is caring. Show us your skills.  
Tag us @avantiwestcoast using #MyModelTrain

\*'Livery' (pronounced liv-uh-ree) is the name for the design on the outside of a train.

